

Live Lines

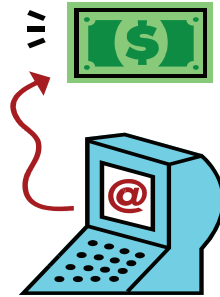
Woodbury County Rural Electric Cooperative

February 2011

E-Bill, On-line Bill Payment Now Available

Paying your bill just got easier. You now have the option of going on-line and paying your bill over the internet. No more writing checks and going through the trouble of mailing in the payment.

If you would like to pay on-line, go to the RECs web site at www.woodburyrec.com. In the upper right hand corner of the home page you will see the prompt – E-bill login. Just click on that and you will be brought to the e-bill payment page. First time users will need to enter an email address and set up a password then just follow the instructions.



In addition to paying your bill, you will also be able to look at past months bills and see graphs of your usage.

At the present time, only bank checking or savings accounts, with a bank routing number and account number, may be used for E-bill payment. Debit cards and credit cards can not be accepted.

If you have any questions about the new e-bill, on-line bill payment option, call the REC office at 712-873-3125 or 800-469-3125.

The Greatest Energy Saver



The greatest energy saver ever invented is the off switch. If you aren't using an electric device either turn it off or unplug it. It's easy and very cheap.

Be A Sweetheart And Earn \$25!

This Valentines Day be a sweetheart to yourself and the environment. Pull the plug on those old, inefficient appliances and show your love for energy efficiency.

Woodbury County REC encourages you to get rid of old working refrigerators, freezers and window air conditioners. The cooperative will send a certified recycling company to pick up your qualifying old appliance and pay you \$25 each for up to three appliances.

Those old appliances use many times the electricity that newer, Energy Star-qualified appliances use. So pull the plug and save electricity.

Call Woodbury County REC at (800)469-3125 or (712)873-3125 between 7:30 a.m. and 4 p.m. Monday through Friday to schedule a pickup.

Valentine's Day Facts

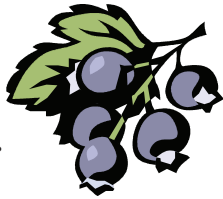
* On February 14, 270, Roman Emperor Claudius II, dubbed "Claudius the Cruel," beheaded a priest named Valenatine for performing marriage ceremonies. Claudius II had outlawed marriages when Roman men began refusing to go to war in order to stay with their wives.

* Around 15 percent of U.S. women send themselves flowers on Valentine's Day.

* About 1 billion Valentine's Day cards are exchanged each year. That's the largest seasonal card sending occasion of the year, next to Christmas.

* Valentine's Day is big business. Consumers will spend an average of \$77 on Valentine's Day gifts.

The Recipe Corner



Easy Berry Cobbler

1/4 cup butter or margarine
3/4 cup milk
1 cup sugar
1 cup flour
1 1/2 teaspoons baking powder
2 cups berries, cherries or peaches
1/4 to 1 cup sugar

Melt butter in shallow 8 or 9 inch square pan. Mix milk, 1 cup sugar, flour and baking powder with a whisk. Pour over the melted butter. **DO NOT STIR!** Pour the fruit over the batter. **DO NOT STIR!** Pour 1/4 to 1 cup sugar over the fruit (or you can mix the sugar with the fruit before putting on the batter). The amount of sugar depends on the fruit and how sweet you like it, but 1/4 cup is usually enough. Bake at 350 degrees for 30 minutes.

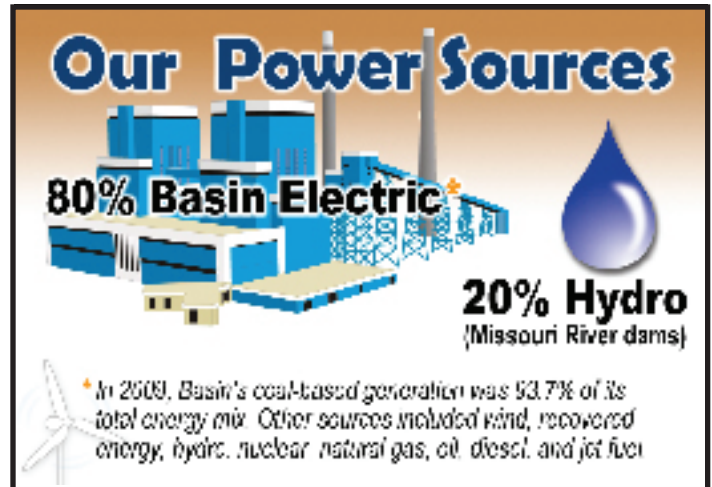
Space Heater Safety Note!

Never, never, never plug an electric space heater into an extension cord. That is a fire waiting to happen!

Major Renewable Energy Project Nearing Completion

Construction on the new Crow Lake wind energy center east of Chamberlain, S.D., will end in early 2011. When it does, Basin Electric Power Cooperative will have more than 700 megawatts of wind generation in its portfolio.

That means members of Woodbury County REC have access to Basin Electric's renewable energy through the cooperative's relationship with power provider Northwest Iowa Power Cooperative of Le Mars. NIPCO expects to purchase about 80 percent of its power from Basin Electric during 2011. NIPCO will buy the remaining 20 percent from Western Area Power Administration, which handles hydropower from the Missouri River dams.



Construction started in October on Basin Electric's \$363-million Crow Lake wind project, which includes 108 turbines. The project's total generating capacity will be 162 MW. The Crow Lake project will be the largest wind project in the U.S. owned solely by a cooperative.

Basin Electric recently dedicated two other new wind projects. One, a \$250-million expansion of PrairieWinds ND1 from two to 82 wind turbines, is located south of Minot, N.D. Together with other small wind projects in that area, the turbines can produce up to 122.6 MW.

Another dedication ceremony celebrated the opening of the Day County Wind Energy Center near Groton, S.D. The 66 new 1.5-MW turbines are capable of powering nearly 25,000 homes for Basin Electric members and the consumers they serve throughout the Midwest.

Five Bill Payment Options Available

As a convenience to you, the REC has five methods that you may use to pay your monthly energy bill.

1. Cash

2. Check

3. Automatic Bank Draft – this is especially convenient if you are gone for the winter or just don't want to keep track of your billing. The amount of your bill will automatically be deducted from your bank account

on the last billing day of the month.

If you are interested in this program, call the REC office and the Bank Draft form will be sent to you.

4. Pay by phone – you may call the REC office and the billing department can take your bank account information over the phone and withdraw the amount of your bill immediately from your account. There would be no forms needed or checks to send in.

5. E-bill, on-line payment – you may go to the REC's web site at www.woodburyrec.com and sign up to pay your bills on-line from the convenience of your own computer.

If you have a question about any of the five bill payment options, give the REC office a call at (800)469-3125 or (712)873-3125.